



Garmin StreetPilot c330 Screen Replacement

This repair guide will show you how to replace a broken screen on your Garmin StreetPilot c330.

Written By: Michael



INTRODUCTION

This guide will provide step by step instructions to enable you to safely and effectively disassemble your Garmin StreetPilot and remove and replace the screen, then reassemble your device.

TOOLS:

- [Phillips #00 Screwdriver](#) (1)
 - [Spudger](#) (1)
 - [Tweezers](#) (1)
-

Step 1 — Outer Casing



- Use a plastic spudger tool to remove the plastic frame.
- Insert the tool into the groove in the center of the top of the outer frame and lever it gently until it pops out.

Step 2




- Use a phillips head screw driver to remove all four screws in the corners around the screen.

☑ Set the screws aside for later.

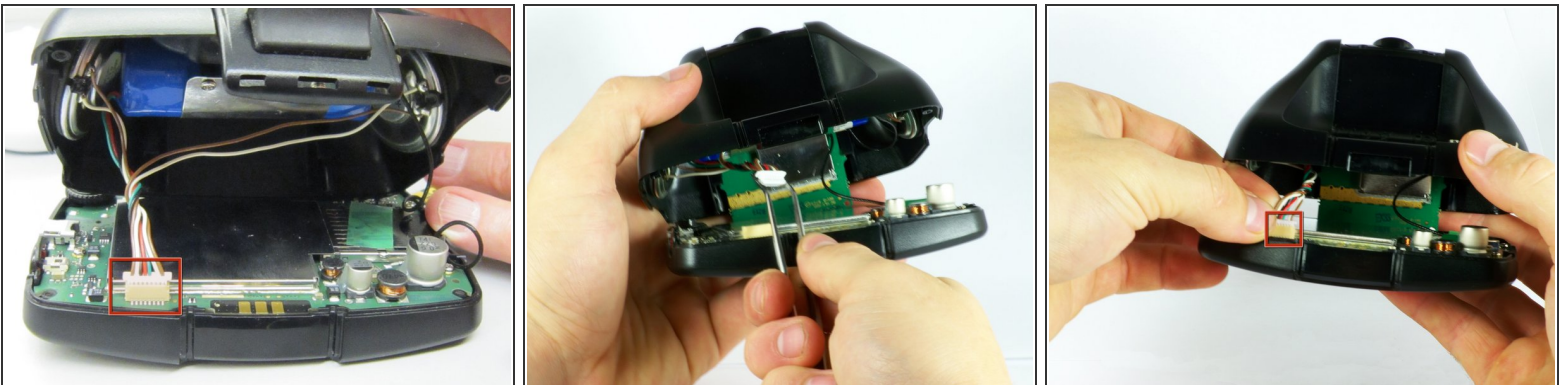
Step 3



- Gently pull from both ends to separate the front panel from the back.

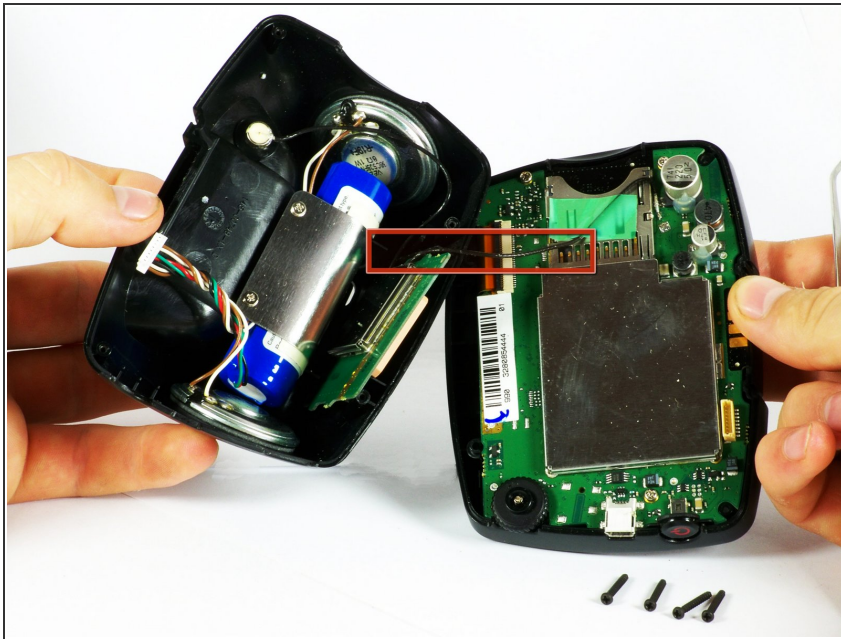
 Do not force the pieces apart wider than the length of the connecting wires or you will damage the wiring.

Step 4



- Locate the white wire clip. Gently unplug it using either your fingers or tweezers.

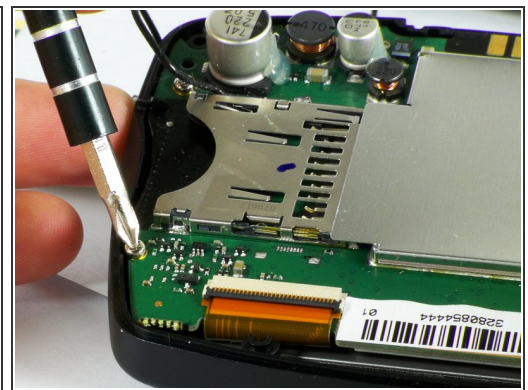
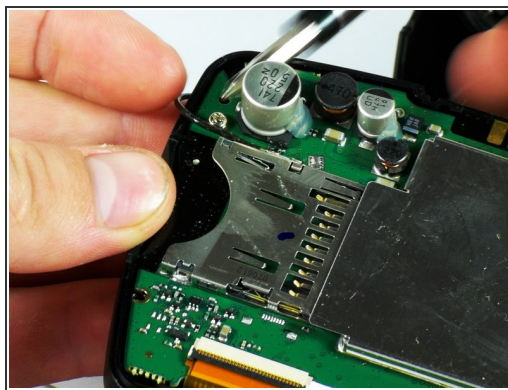
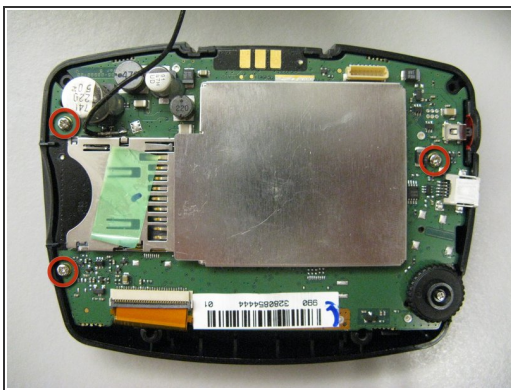
Step 5



- Carefully expose both halves of the device.

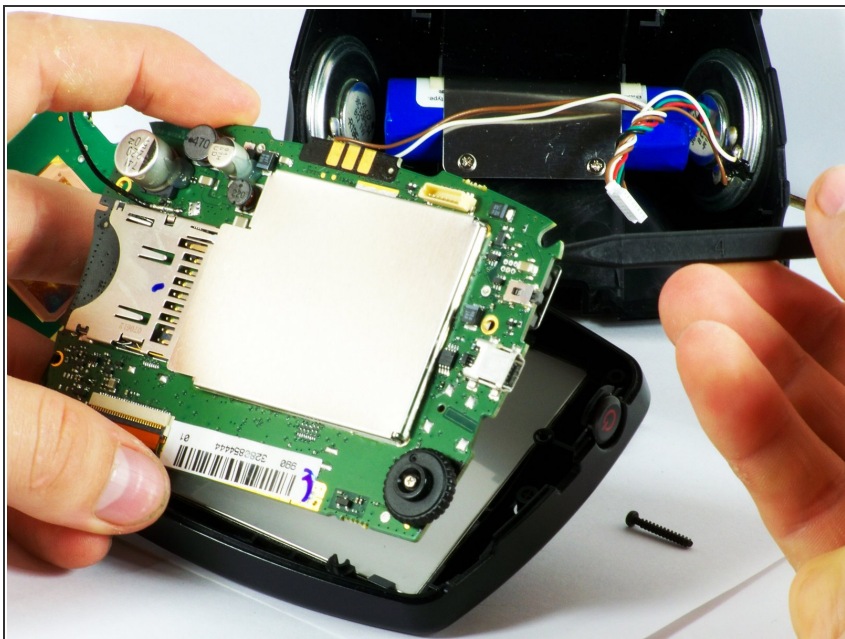
⚠ Be sure to not pull the two halves apart too hard to avoid damaging the black wire.

Step 6 — Screen



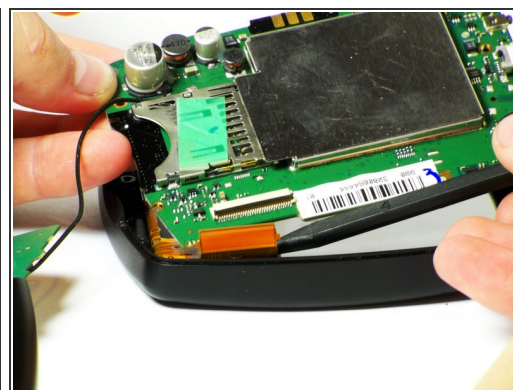
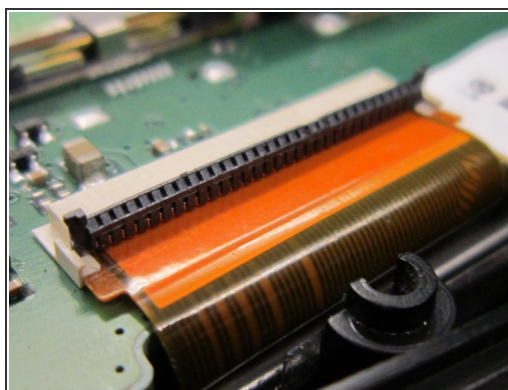
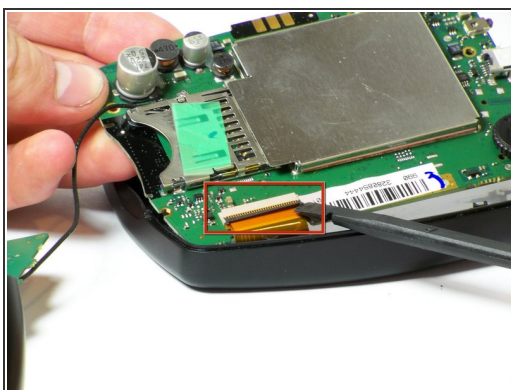
- Locate the three screws holding the motherboard in place.
- Remove screws.
- ☑ Set screws aside in a safe place.

Step 7



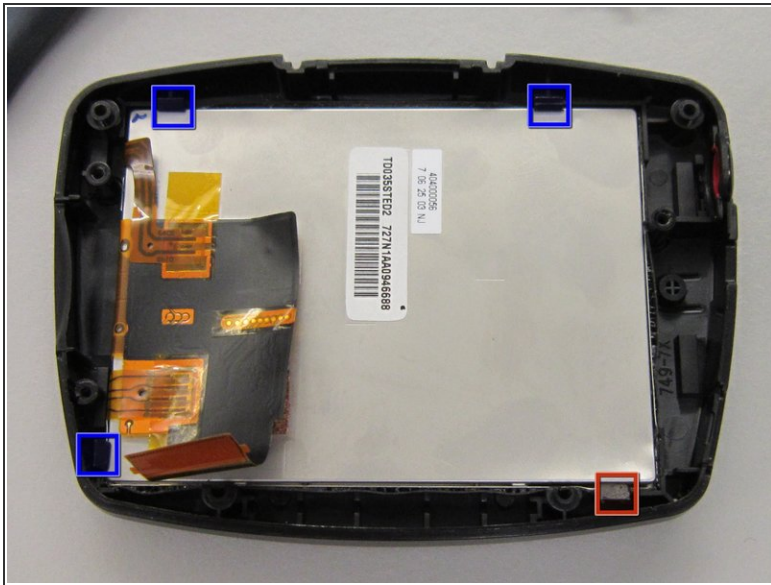
- Use Spudger to lift up motherboard.

Step 8



- To remove the ribbon cable, lift the black latch using the spudger tool.
- Separate the connection using either your fingers, tweezers, or the spudger.

Step 9



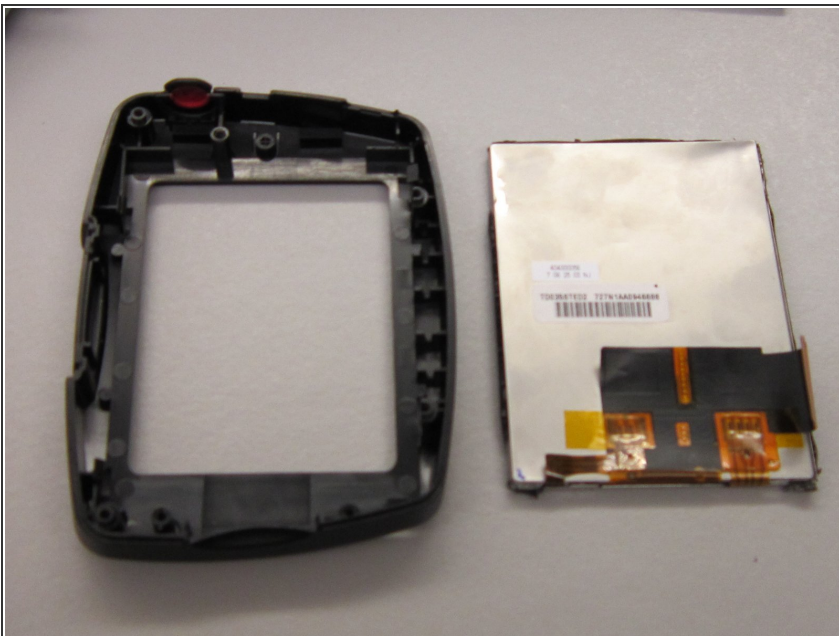
- Slide the spudger tool under the first flexible tab located on the right side of the bottom of the screen.
 - The tab is denoted by a red box in the photo.
 - There are two tabs at the top of the screen that are not flexible
- Rotate the spudger outward until the tab is no longer holding the screen.
- Push the screen out from the front.

Step 10



- Find the second flexible tab near the screen's wires and slide spudger under tab.
 - ⓘ The tab is denoted by a red box in the photo.
- Rotate spudger outward until the tab is no longer holding the screen.
- Push the screen out from the front.

Step 11



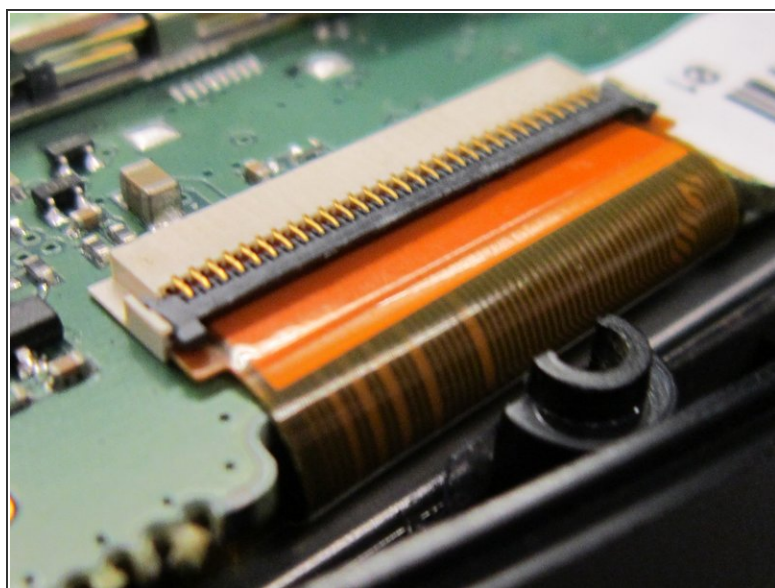
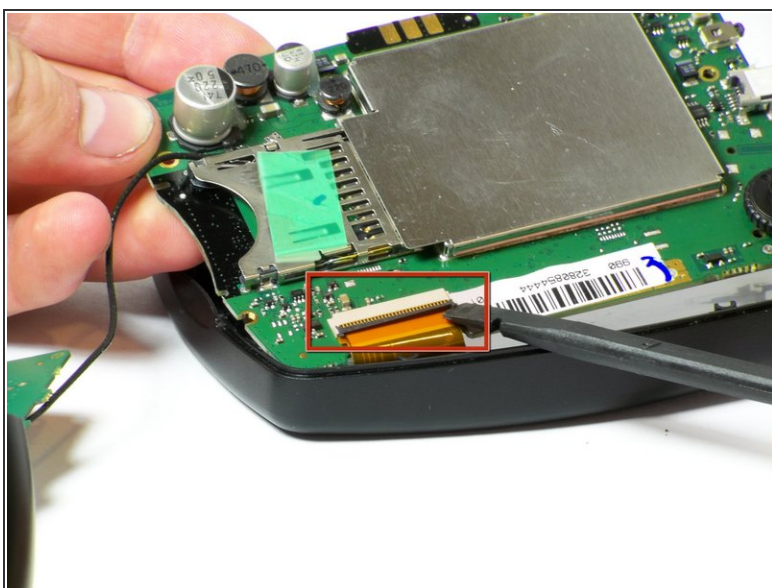
- Separate the screen from the front cover.

Step 12



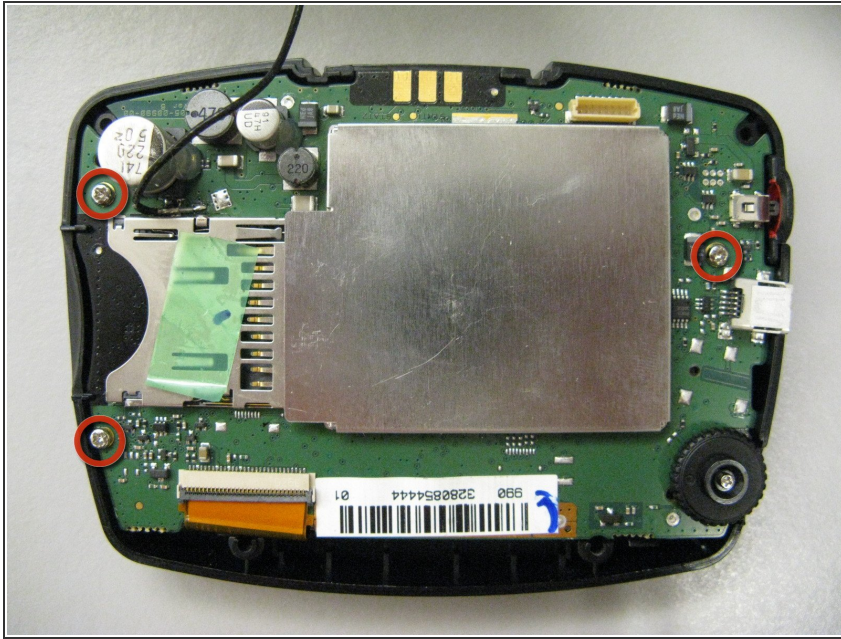
- Have your new screen ready to insert, making sure it is fully unwrapped.
- Find the tabs used to secure the screen as highlighted in the photo.
- Slide the bottom of the screen under the permanent tabs.
 - The permanent tabs are denoted by blue boxes in the photo.
- Use the spudger tool to raise the flexible tabs in order to reinsert the screen completely into the front cover.

Step 13



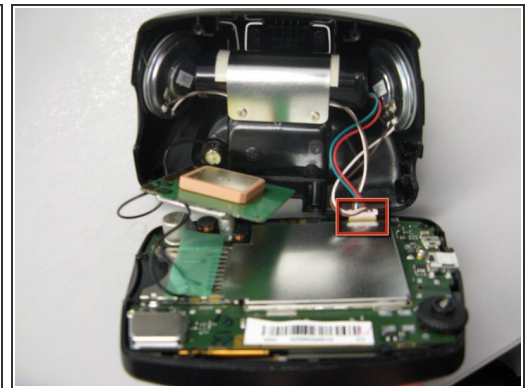
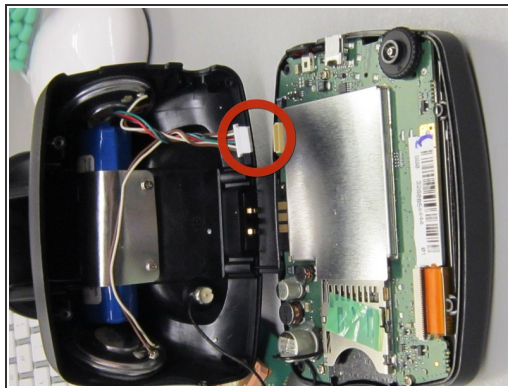
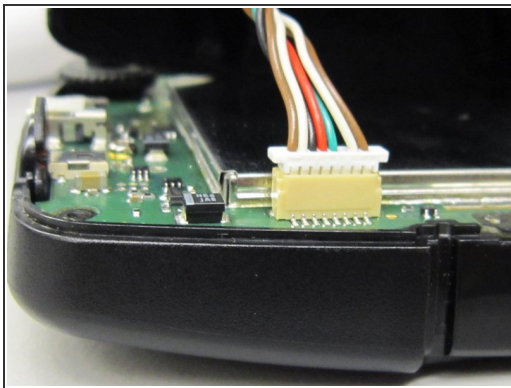
- Reinsert the ribbon cable into the slot you removed it from.
- Lower the black latch using the spudger tool.

Step 14



- Reattach the motherboard with the three screws you removed previously.
- ⓘ Use the silver screws.

Step 15



- Locate the white wire clip.
- Plug it back in.

Step 16



- Screw the front panel back onto the base using the four screws you removed in step 2.
- Use the black screws.

Step 17



- Gently pop the plastic frame back into place.

To reassemble your device, follow these instructions in reverse order.